

Steps to place the EAs on MT

You will find the 12 Expert Advisors attached to this lecture as a resource file. Follow the steps below to place the EAs properly on your platform:

1. Download the zip file and unzip it

The EAs are attached as a zip file for easier uploading and downloading.

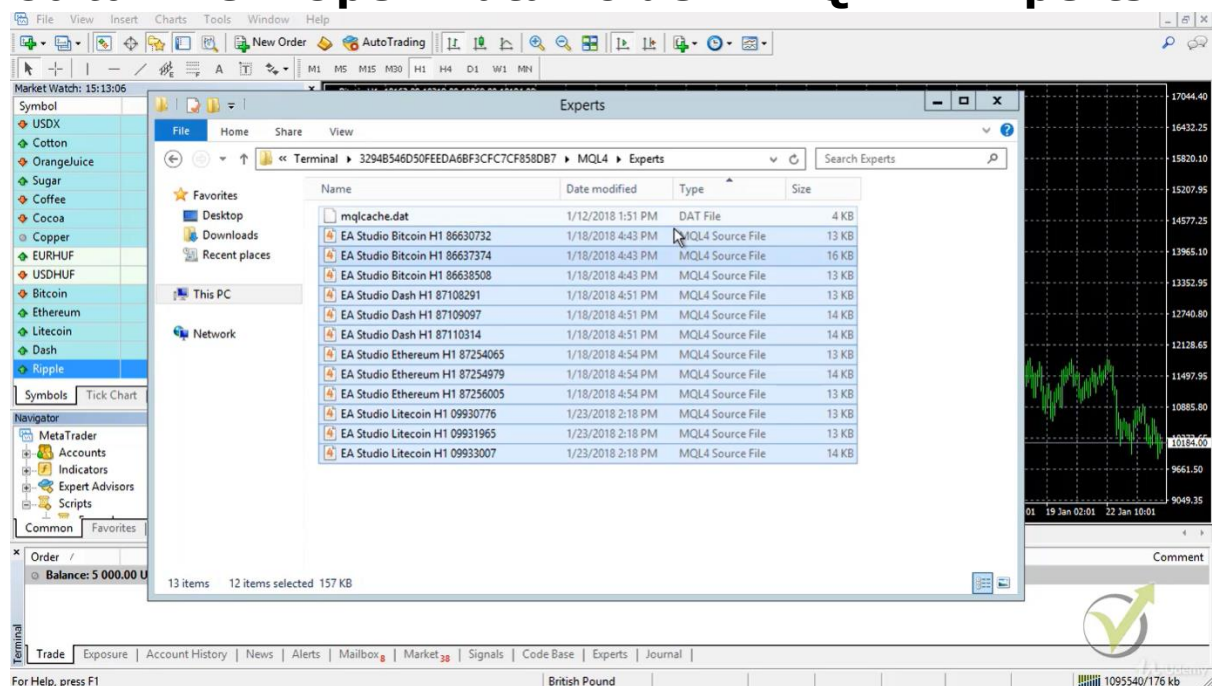
When we update the EAs, you will find the new zip file in this same lecture.

2. Copy the EAs

You need to copy the EAs with MQ4 type if you use MetaTrader 4 and the EAs with MQ5 type if you use MetaTrader 5.

3. Paste the EAs in the Experts folder

Go to **File->Open Data Folder->MQL4->Experts**



The screenshot shows the MetaTrader 4 interface with the 'Experts' folder open in the 'MQL4' directory. The folder contains the following files:

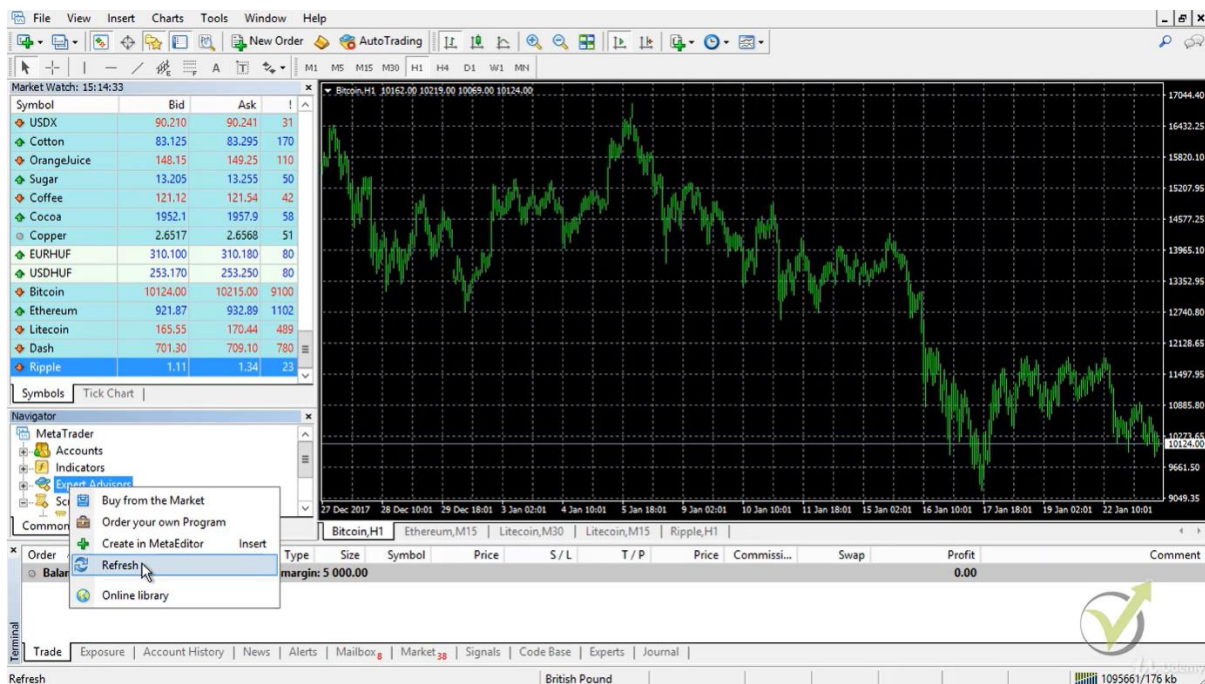
Name	Date modified	Type	Size
mqlcache.dat	1/12/2018 1:51 PM	DAT File	4 KB
EA Studio Bitcoin H1 86630732	1/18/2018 4:43 PM	MQL4 Source File	13 KB
EA Studio Bitcoin H1 86637374	1/18/2018 4:43 PM	MQL4 Source File	16 KB
EA Studio Bitcoin H1 86638508	1/18/2018 4:43 PM	MQL4 Source File	13 KB
EA Studio Dash H1 87108291	1/18/2018 4:51 PM	MQL4 Source File	13 KB
EA Studio Dash H1 87109097	1/18/2018 4:51 PM	MQL4 Source File	14 KB
EA Studio Dash H1 87110314	1/18/2018 4:51 PM	MQL4 Source File	14 KB
EA Studio Ethereum H1 87254065	1/18/2018 4:54 PM	MQL4 Source File	13 KB
EA Studio Ethereum H1 87254979	1/18/2018 4:54 PM	MQL4 Source File	14 KB
EA Studio Ethereum H1 87256005	1/18/2018 4:54 PM	MQL4 Source File	13 KB
EA Studio Litecoin H1 09930776	1/23/2018 2:18 PM	MQL4 Source File	13 KB
EA Studio Litecoin H1 09931965	1/23/2018 2:18 PM	MQL4 Source File	13 KB
EA Studio Litecoin H1 09933007	1/23/2018 2:18 PM	MQL4 Source File	14 KB

Paste the Expert Advisors in this folder and close it.

4. Compile the EAs

In MetaTrader 4, there are two ways to compile the EAs:

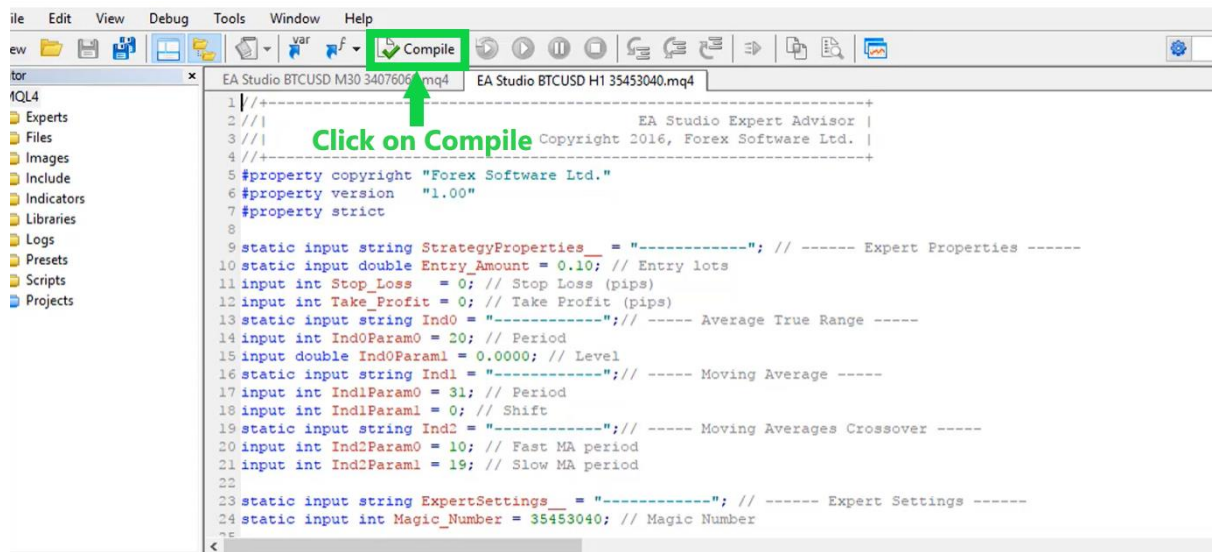
A. *Right-click over the Expert Advisors tab in Navigator and click on Refresh:*



This way, under the Expert Advisors tab you will see the ready trading robots. Ex4 files will show up. These are the compiled files.

B. *Double click on each EA and open the MetaEditor*

Click on compile, and the ex4 file will be created.



Click on Compile

```

1 //+-----+
2 //|                                     EA Studio Expert Advisor |
3 //|                                     Copyright 2016, Forex Software Ltd. |
4 //+-----+
5 #property copyright "Forex Software Ltd."
6 #property version "1.00"
7 #property strict
8
9 static input string StrategyProperties_ = "-----"; // ----- Expert Properties -----
10 static input double Entry_Amount = 0.10; // Entry lots
11 input int Stop_Loss = 0; // Stop Loss (pips)
12 input int Take_Profit = 0; // Take Profit (pips)
13 static input string Ind0 = "-----"; // ----- Average True Range -----
14 input int Ind0Param0 = 20; // Period
15 input double Ind0Param1 = 0.0000; // Level
16 static input string Ind1 = "-----"; // ----- Moving Average -----
17 input int Ind1Param0 = 31; // Period
18 input int Ind1Param1 = 0; // Shift
19 static input string Ind2 = "-----"; // ----- Moving Averages Crossover -----
20 input int Ind2Param0 = 10; // Fast MA period
21 input int Ind2Param1 = 19; // Slow MA period
22
23 static input string ExpertSettings_ = "-----"; // ----- Expert Settings -----
24 static input int Magic_Number = 35453040; // Magic Number

```

me	Category
How to conduct a qualitative analysis of trading signals and select the best of them	Examples, Trading Systems, Statistics and analysis
Angles in Trading. Further Study Required	Examples, Trading, Trading Systems, Indicators
ZUP - universal ZigZag with Pesavento patterns. Graphical interface	Integration, Indicators
How to build and test a Binary Options strategy with the MetaTrader 4 Strategy Tester	Examples, Tester, Statistics and analysis, Indicators

If you want to use this method, you need to do it for each Expert Advisor. Option A does it for all EAs at ones.

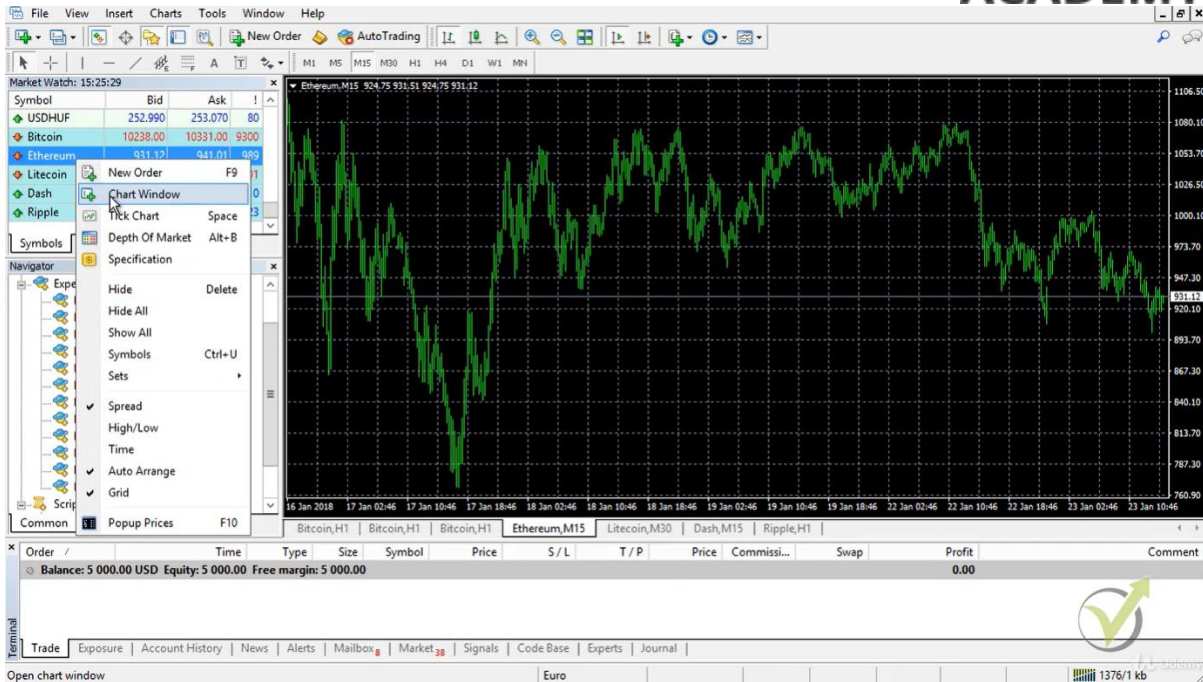
In MetaTrader 5, the first option **A. is not available. You can compile the EAs only from the MetaEditor following option **B.***

5. Open different chart windows for each Expert Advisor

Each Expert Advisor should be placed on a different chart window.

It is essential to place the EAs on the appropriate time frame.

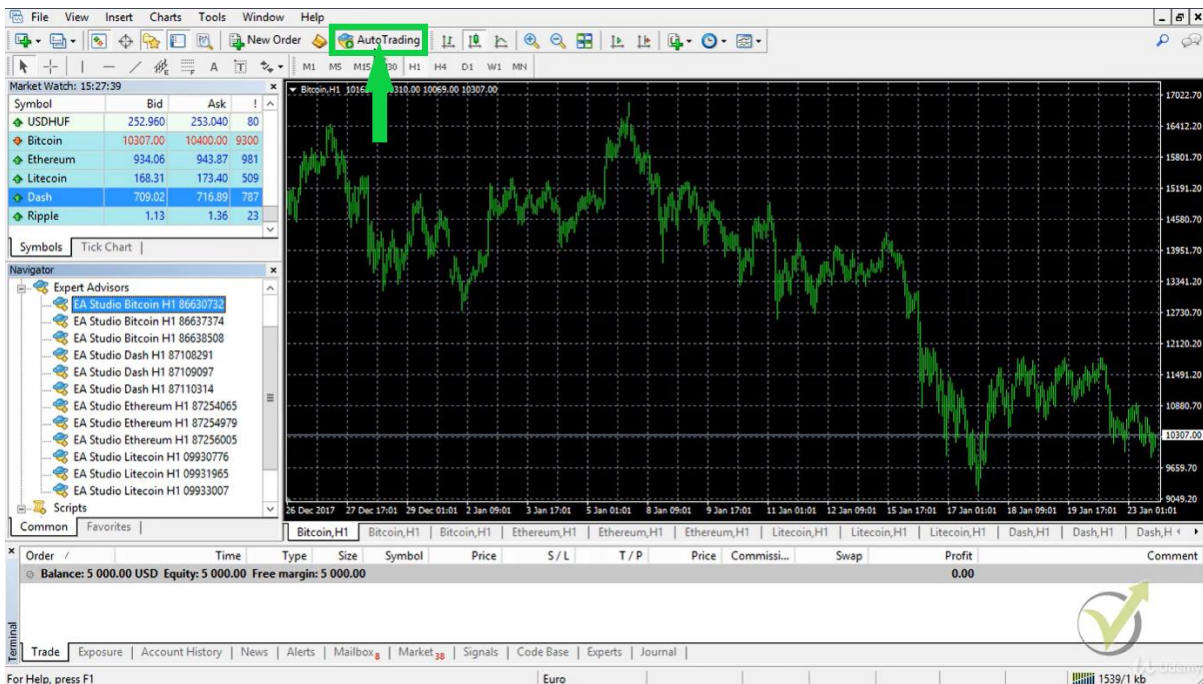
You can open a new chart when Right-click over the symbol and select Chart Window:



6. Enable the Auto Trading:

It is important to enabling the Auto Trading before placing the EAs over the chart.

Click on the AutoTrading button to make it green:



One of the most FAQ that we receive is Why the EAs do not open trades? The most common reason is that the AutoTrading was enabled after the EAs were attached to the chart. This way it will not work.

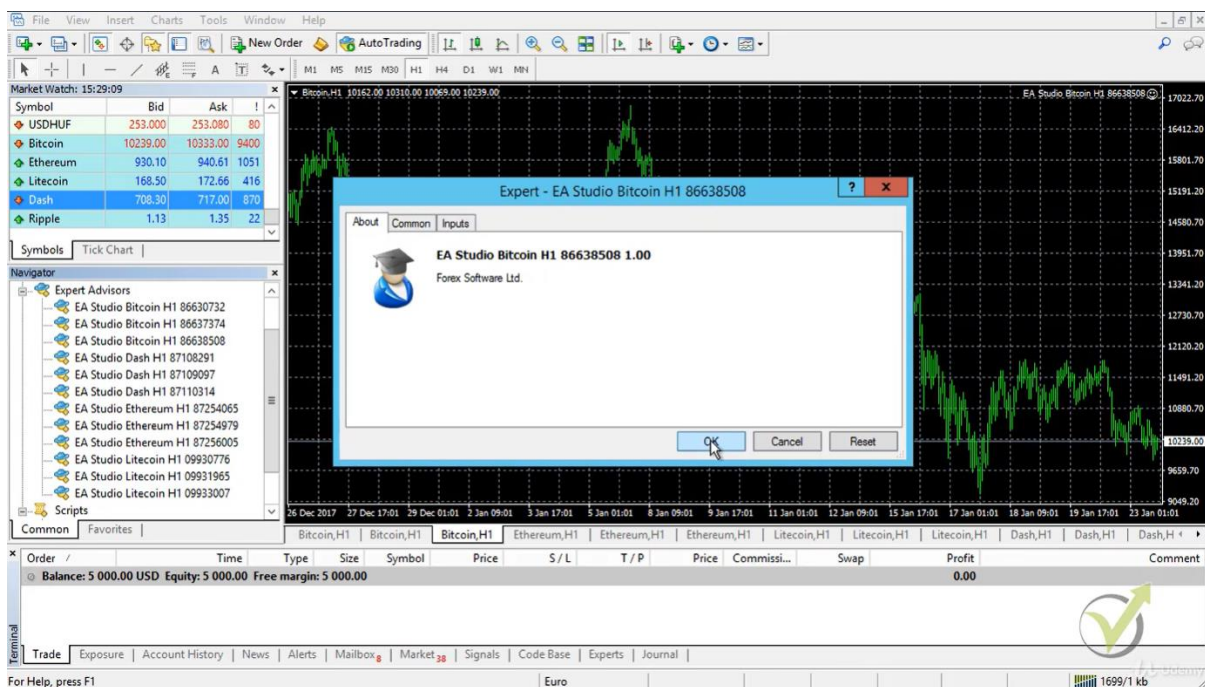
If you did that mistake, it is just fine. Remove the EAs from the charts, enable the AutoTrading, and drag them back.

7. Attach each EA on a separate chart

You can do the attachment in two different ways:

- Drag the EA over the chart
- Double-click on the EA

A small menu will show:



Click on OK and the Expert Advisor will be attached to the chart.

Look at the right up corner, and look for the smiley face:



Petko & Forex Academy team,